

LHB Series Manual Limit Switch

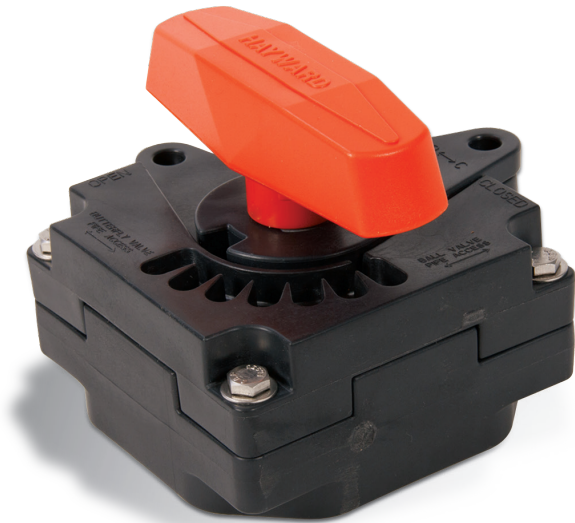
FOR BALL VALVES UP TO 6" AND
BUTTERFLY VALVES UP TO 8"

KEY FEATURES

- Remote Monitoring of Critical Services
- Retrofits to Existing Valves
- Robust GFPP Body, Cover and Plate
- 304 Stainless Steel Stem and FPM Seals
- Fits All Hayward® Ball Valves up to 6" and Butterfly Valves up to 8"
- Available with "Dead-Man" Spring Return Handle or Handlever (LHB-SR)
- Two Adjustable SPDT 10 Amp at 120 VAC Switches (Open/Close Position)
- 1/2" Conduit Port
- Terminal Blocks for Ease of Wiring
- Meets ISO5211, F05, F07 and F10 Patterns
- NEMA 4X
- Switches CSA Listed

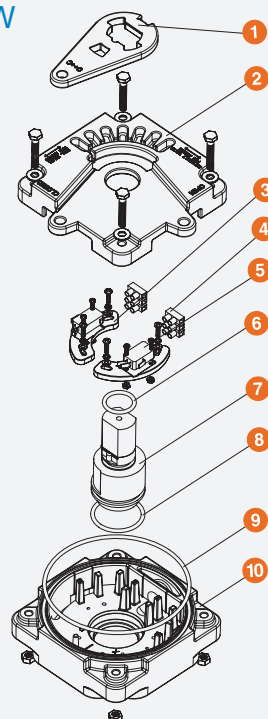
OPTIONS

- Additional Two Switches
- Optional Handles – Lever or T-Handle



TECHNICAL INFORMATION

EXPLODED VIEW



SELECTION CHART

MANUAL LIMIT SWITCH MODEL	VALVE SIZE/SERIES
LHB-1	1/2" – 2" TB / TBH (DN15 – DN50) 1-1/2" – 4" BYV (DN40 – DN100)
LHB-2	2-1/2" – 6" TB / TBH (DN65 – DN150) 6" – 8" BYV (DN150 – DN200)
LHB-1-SR	1/2" – 2" TB (DN15 – DN50)
LHB-2-SR	2-1/2" – 6" TB (DN65 – DN150)

Pat. No's.: 9,010,721; and 9,0101, 722; 9, 702,480

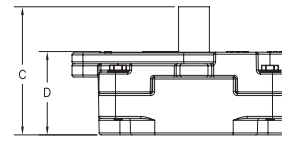
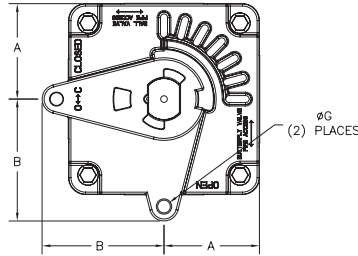
LHB Series Manual Limit Switch

FOR BALL VALVES UP TO 6" AND BUTTERFLY VALVES UP TO 8"

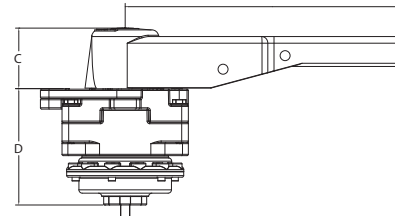
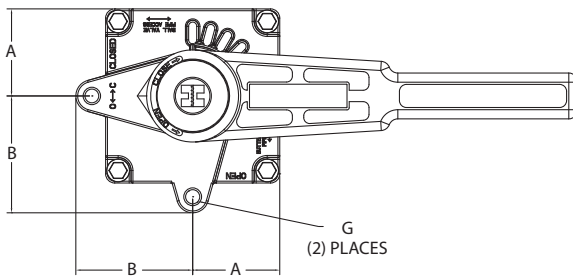
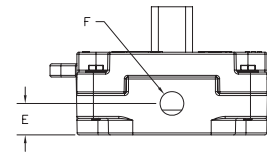
TECHNICAL INFORMATION, CONTINUED

PARTS LIST

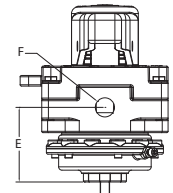
1. Lock Plate
2. Cover
3. Adjustment Plate
4. Terminal Block
5. Switch
6. Upper Shaft O-Ring
7. Shaft
8. Lower Shaft O-Ring
9. Body O-Ring
10. Body



LHB



LHB-SR



DIMENSIONS

MANUAL LIMIT SWITCH MODEL	VALVE SIZE/SERIES	A	B	C	D	E	F	G
		in / mm	in / mm	in / mm	in / mm	in / mm	in	in / mm
LHB-1	1/2" – 2" TB / TBH 1-1/2" – 4" BYV	2.38 / 60	3.19 / 81	3.88 / 99	2.52 / 64	.95 / 24	1/2" NPT	.38 / 10
LHB-2	2-1/2" – 6" TB / TBH 6" and 8" BYV	2.89 / 73	3.69 / 94	3.88 / 99	2.52 / 64	.95 / 24	1/2" NPT	.38 / 10
LHB1-SR	1/2" – 2" TB / TBH	2.38 / 61	3.19 / 81	2.28 / 60	4.38 / 112	2.81 / 71	1/2" NPT	.38 / 10
LHB2-SR	2-1/2" – 6" TB / TBH	2.89 / 73	3.69 / 94	2.28 / 60	2.52 / 64	112 / 71	1/2" NPT	.38 / 10

Dimensions are subject to change without notice – consult factory for installation information



Hayward is a registered trademark of Hayward Industries, Inc. © 2018 Hayward Industries, Inc.

USA: 1.888.429.4635 • Fax: 1.888.778.8410 • One Hayward Industrial Drive • Clemmons, NC 27012 • Email: hfcsales@hayward.com
 Canada: 1.888.238.7665 • Fax: 1.905.829.3636 • 2880 Plymouth Drive • Oakville, ON L6H 5R4 • Email: hflowcanada@hayward.com
 Visit us at: haywardflowcontrol.com