



QV Series QIC2™ Compact Ball Valves

1/2" TO 2" PVC

KEY FEATURES

- Gray PVC
- Rugged, Compact and Lightweight Design
- Full Port Design
- PTFE Seats
- EPDM O-Ring Seals
- Low Torque, Easy 1/4-Turn Operation
- No Integral Parts to Replace
- Perfect for OEM Requirements

MATERIALS

- PVC Cell Class 12454 per ASTM D1784

TECHNICAL INFORMATION

SELECTION CHART

SIZE	MATERIAL	END CONNECTION	SEALS	PRESSURE RATING
1/2" – 2" (DN15 – DN50)	PVC	Socket and Threaded	EPDM	150 PSI @ 70°F Non-Shock

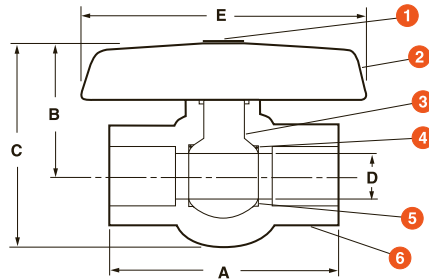
QV Series QIC2™ Compact Ball Valves

1/2" TO 2" PVC

TECHNICAL INFORMATION, CONTINUED

PARTS LIST

Component	Material
1. Cap	ABS
2. Handle	ABS
3. Stem and Ball	PVC
4. O-Ring	EPDM
5. Seat	PTFE
6. Body	PVC



DIMENSIONS

SIZE in/DN	A in/mm	B in/mm	C in/mm	D in/mm	E in/mm	WEIGHT lbs/kg
1/2/15	3.10/78	1.61/41	2.58/66	.59/15	2.83/72	.22/.10
3/4/20	3.57/91	1.93/49	3.11/79	.78/19	3.14/80	.44/.20
1/25	4.16/106	2.21/56	3.46/88	.98/25	3.73/95	.69/.31
1-1/4/32	4.83/123	2.60/66	3.86/98	1.26/32	4.36/111	.90/.41
1-1/2/40	5.09/129	2.85/72	4.34/110	1.53/39	4.63/118	1.19/.54
2/50	5.90/150	3.45/88	5.29/134	1.96/50	5.49/139	1.86/.84

Dimensions are subject to change without notice – consult factory for installation information

Cv VALUES

SIZE in/DN	Cv VALUES	SIZE in/DN	Cv VALUES
1/2/15	8.0	1-1/4/32	75.0
3/4/20	16.0	1-1/2/40	90.0
1/25	30.0	2/50	150.0

PRESSURE LOSS CALCULATION FORMULA

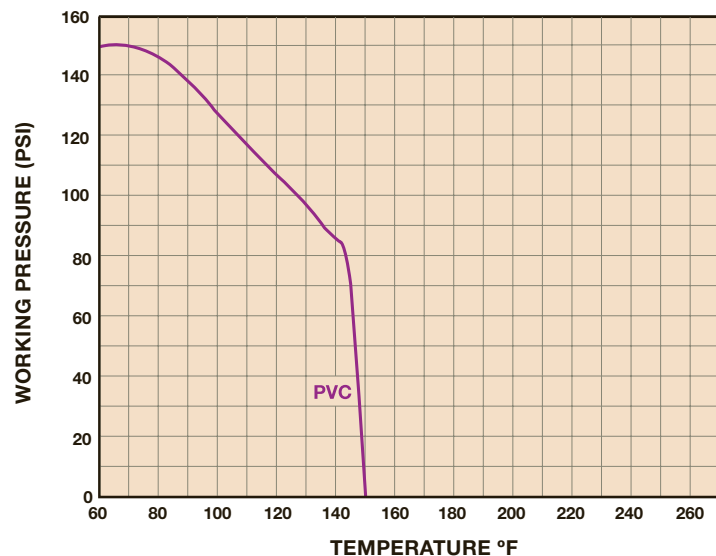
$$\Delta P = \left[\frac{Q}{C_v} \right]^2$$

ΔP = Pressure Drop

Q = Flow in GPM

Cv = Flow Coefficient

OPERATING TEMPERATURE/PRESSURE



Hayward is a registered trademark
of Hayward Industries, Inc.
© 2015 Hayward Industries, Inc.

Contact Hayward Flow Control with questions: **USA:** 1-888-429-4635 • Fax: 1-888-778-8410 • One Hayward Industrial Drive • Clemmons, NC 27012 USA
Canada: 1.888.238.7665 • Fax: 1.905.829.3636 • 2880 Plymouth Drive • Oakville, ON L6H 5R4 Canada • Email: hflowcanada@haywardnet.com
Visit us at: www.haywardflowcontrol.com • E-mail: hflow@haywardnet.com