



DAB Series True Union Diaphragm Valves

1/2" TO 2" PVC AND CPVC

KEY FEATURES

- Available in PVC and CPVC
- Position Indicator
- Sure-Grip Handwheel
- Choice of FPM, EPDM or PTFE Diaphragms*

OPTIONS

- Pneumatic Actuation
- PVDF Vapor Barrier**

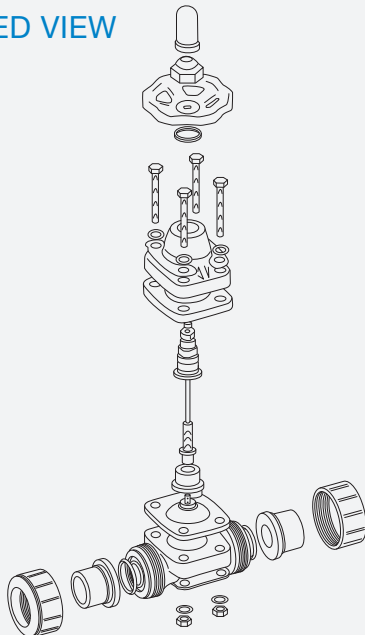
MATERIALS

- PVC Cell Class 12454 per ASTM D1784
- CPVC Cell Class 23447 per ASTM D1784
- FPM, EPDM and PTFE O-Ring Seals

* All PTFE diaphragms are EPDM backed
 ** PVDF Vapor Barrier available with PTFE diaphragm only

TECHNICAL INFORMATION

EXPLODED VIEW



SELECTION CHART

SIZE	MATERIAL	END CONNECTION	DIAPHRAGM	SEALS	PRESSURE RATING
1/2" - 2"	PVC or CPVC	Socket and Threaded	FPM, EPDM or PTFE*	FPM or EPDM	150 PSI @ 70°F 10 Bar @ 21°C Non-Shock

* EPDM and PTFE diaphragms are available with a PVDF Vapor Barrier

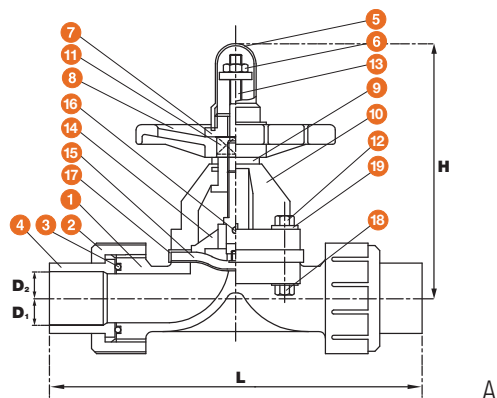
DAB Series True Union Diaphragm Valves

1/2" TO 2" PVC AND CPVC

TECHNICAL INFORMATION, CONTINUED

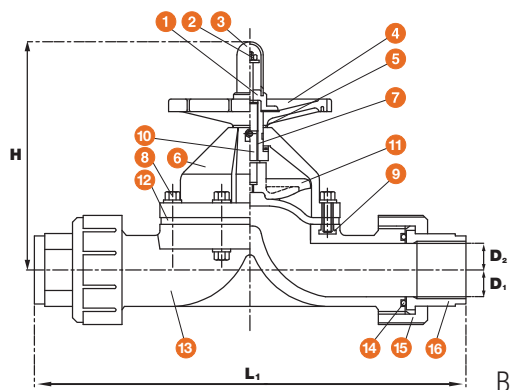
1/2" – 1" PARTS LIST (A)

- | | | |
|--------------------|------------------|---------------------------|
| 1. Union Body | 8. Hand Wheel | 15. Diaphragm |
| 2. Union Gland Cap | 9. Thrust Washer | 16. Pin |
| 3. Union O-Ring | 10. Bonnet | 17. Diaphragm Cover Plate |
| 4. Union Body Cap | 11. Sleeve | 18. Bolt |
| 5. Gauge Cap | 12. Nut | 19. Washer |
| 6. Stopper Nut | 13. Stem | |
| 7. Lock Nut | 14. Compressor | |



1-1/4" – 2" PARTS LIST (B)

- | | | |
|------------------|------------------|---------------------|
| 1. Lock Nut | 8. Bolt | 15. Union Gland Cap |
| 2. Stopper Nut | 9. Inserted Nut | 16. Union Body Cap |
| 3. Gauge Cap | 10. Sleeve | 17. Plate |
| 4. Hand Wheel | 11. Compressor | 18. Washer |
| 5. Thrust Washer | 12. Diaphragm | |
| 6. Bonnet | 13. Union Body | |
| 7. Stem | 14. Union O-Ring | |



DIMENSIONS

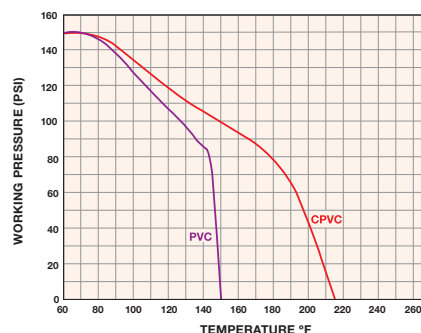
SIZE in / DN	L (Socket) in / mm	L1 (Thread) in / mm	d1 in / mm	d2 in / mm	H in / mm
1/2 / 15	5.90 / 150	5.55 / 141	.85 / 22	1/2 – NPT	3.74 / 95
3/4 / 20	6.69 / 170	6.22 / 158	1.06 / 27	3/4 – NPT	3.94 / 100
1 / 25	7.95 / 202	7.17 / 182	1.32 / 34	1 – NPT	4.33 / 110
1-1/4 / 30	11.22 / 285	10.63 / 270	1.91 / 48	1-1/4 – NPT	7.67 / 195
1-1/2 / 40	11.22 / 285	10.63 / 270	1.91 / 48	1-1/2 – NPT	7.67 / 195
2 / 50	12.79 / 325	12.13 / 308	2.39 / 61	2 – NPT	8.27 / 210

Dimensions are subject to change without notice – consult factory for installation information

Cv VALUES

SIZE in / DN	Cv VALUES	SIZE in / DN	Cv VALUES
1/2 / 15	5.0	1-1/4 / 30	18.0
3/4 / 20	8.0	1-1/2 / 40	26.0
1 / 25	10.0	2 / 50	56.0

OPERATING TEMPERATURE/PRESSURE



Hayward is a registered trademark of Hayward Industries, Inc.
© 2021 Hayward Industries, Inc.

USA: 1.888.429.4635 • Fax: 1.888.778.8410 • One Hayward Industrial Drive • Clemmons, NC 27012 • Email: hfcsales@hayward.com
Canada: 1.888.238.7665 • Fax: 1.905.829.3636 • 2880 Plymouth Drive • Oakville, ON L6H 5R4 • Email: hflowcanada@hayward.com
Visit us at: haywardflowcontrol.com