

# HRSN3 Series Electronic Fail-Safe Actuator Battery Backup



## KEY FEATURES

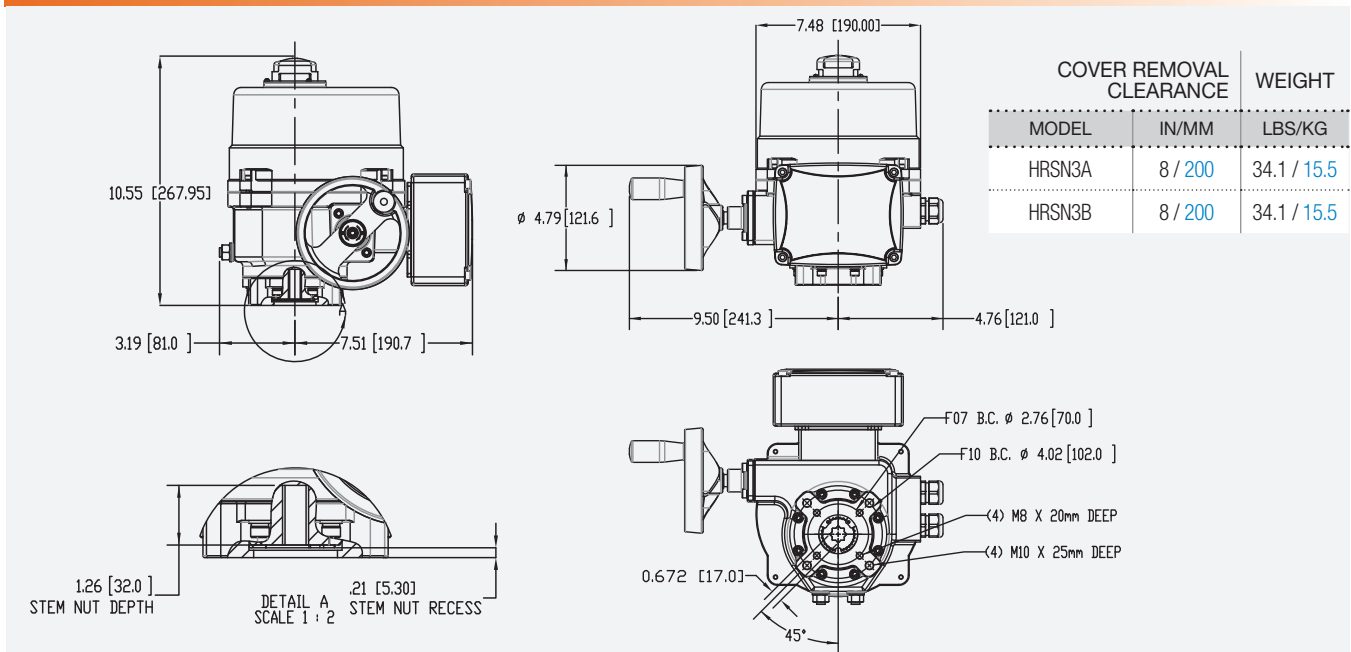
- Stored Energy System provides positive valve positioning upon loss of mains power
- Up to 1770"lbs torque for ball valves and butterfly valves up to 8"
- 24VAC/VDC operation standard, with 120vac and 230vac transformer options available
- Field selectable fail CW or CCW operation for complete flexibility
- Self-Contained charge and discharge control of the Lithium-Ion Battery provides maximum life from the reserve energy system
- Battery Pack is field replaceable to minimize down-time
- Stored Energy status indicators show system health
- Fault-Out contact is standard and allows remote monitoring of the stored energy system performance.
- ISO5211 Mechanical mount with removable double-square female drive socket
- Two (2) 3/4" EMT ports for ease of field wiring
- NEMA 4/4x/IP67 Compliant
- Optional Torque Switches

*HRS Series Electronic Fail-Safe Actuators are intended to provide positive positioning in power-fail conditions.*



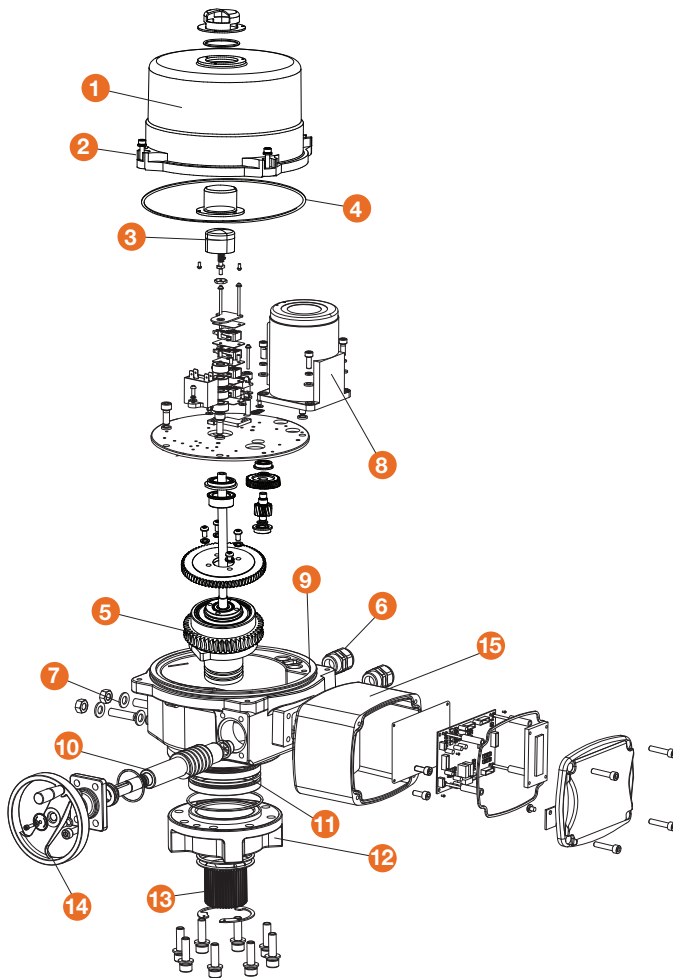
HRSN2  
HRSN3  
HRSN4  
HRSN5

## TECHNICAL INFORMATION



# HRSN3 Series Electronic Fail-Safe Actuator Battery Backup

FOR BALL AND BUTTERFLY VALVES UP TO 8"



## PARTS LIST

1. Cast Aluminum Cover
2. Captured Cover Screws
3. High Visibility Position Indicator
4. Cover O-Ring Seal
5. Epicyclic Transmission Set
6. EMT Glands
7. External Mechanical Stops
8. Drive Motor
9. Cast Aluminum Housing
10. Worm Override Shaft
11. Heavy Final Drive Bearing
12. ISO5211 Flange
13. Splined Drive Insert
14. Handwheel w/Collapsible Knob
15. Cast Aluminium Control Housing

### ACTUATOR SPECIFICATIONS

		HRSN3A..20	HRSN3B..20	
Supply	Torque Output (in-lbs / Nm)	<b>880 / 100</b>	<b>1770 / 200</b>	
	Current Draw (Start / Run / LRA)	4.2A / 3.2A / 11.0A	4.2A / 3.2A / 11.0A	
	Speed (90°) DC-60Hz/50Hz, seconds	14 / 14	28 / 28	
	Motor - 24V DC Perm Magnet 2 Pole Brush	25W	25W	
24VAC ~ 24VDC	On/Off / Proportional	Duty Cycle (IEC60034)	75% (S2-15 min) / <b>75% (S4-75%)</b>	
		Motor Protection, Temp / Class	All - 130°C / Class B	
		Motor Starts, per hour, Max	All - 600	
120VAC	Requires 120:24 Transformer Pack, 250VA	OEMBBC120-250	OEMBBC120-250	
230VAC	Requires 230:24 Transformer Pack, 250VA	OEMBBC230-250	OEMBBC230-250	
All	Manual Override	Clutchless Handwheel	Clutchless Handwheel	
	Environmental Rating	NEMA 4/4X & IP67		
	Electrical Entry (2)	3/4" EMT or Polyamide gland		
	Control	On/Off, Proportional		
	Auxiliary Switch - End of Travel	(2) Form A Volt-Free, Rated 10A @ 250vac		
	Ambient Operating Range	-22°F to +158°F / -30°C to +70°C		
	Humidity Range	0-95% RH		
	Altitude Limit	9850 ft / 3000 m		
	<b>BATTERY SPECIFICATIONS</b>		<b>HRSN3A~3B (20 SERIES)</b>	
	Type		22.2V Lithium-Ion pack with charge / discharge control	



Hayward is a registered trademark of Hayward Industries, Inc. © 2020 Hayward Industries, Inc.

USA: 1.888.429.4635 • Fax: 1.888.778.8410 • One Hayward Industrial Drive • Clemmons, NC 27012 • Email: hfcsales@hayward.com  
 Canada: 1.888.238.7665 • Fax: 1.905.829.3636 • 2880 Plymouth Drive • Oakville, ON L6H 5R4 • Email: hflowcanada@hayward.com  
 Visit us at: haywardflowcontrol.com