

NEW PRODUCT PREVIEW

HXBSN 4A~4D Series Electric Actuators for Hazardous Locations, 3 Phase

KEY FEATURES & BENEFITS

- Designed for use in hazardous locations
- Available from 3540”lbs up thru 8850”lbs
- 220/3, 380/3 and 480/3 are available, low voltage and single phase options also available
- Units are equipped with two (2) volt-free Form A Auxiliary switches
- Anti-Condensate heater standard
- ISO5211 compliant mechanical mount w/ double-square female drive socket
- Two (2) 3/4” EMT ports for ease of field wiring
- NEMA 4/4X/IP66 Compliant
- Visual position indicator
- Clutchless Hand Wheel override standard
- Collapsible spinner handle
- Torque switches standard

Notice: Due to certification regulations and traceability requirements, this product is non-cancellable and non-returnable. Verify the product and certifications are approved for the project prior to ordering.



ATEX / IECEx CERTIFIED
Ex II G Ex db IIB T4 Gb
Ex II D Ex tb IIIC T85°C / T100°C / T135°C Db



TECHNICAL INFORMATION

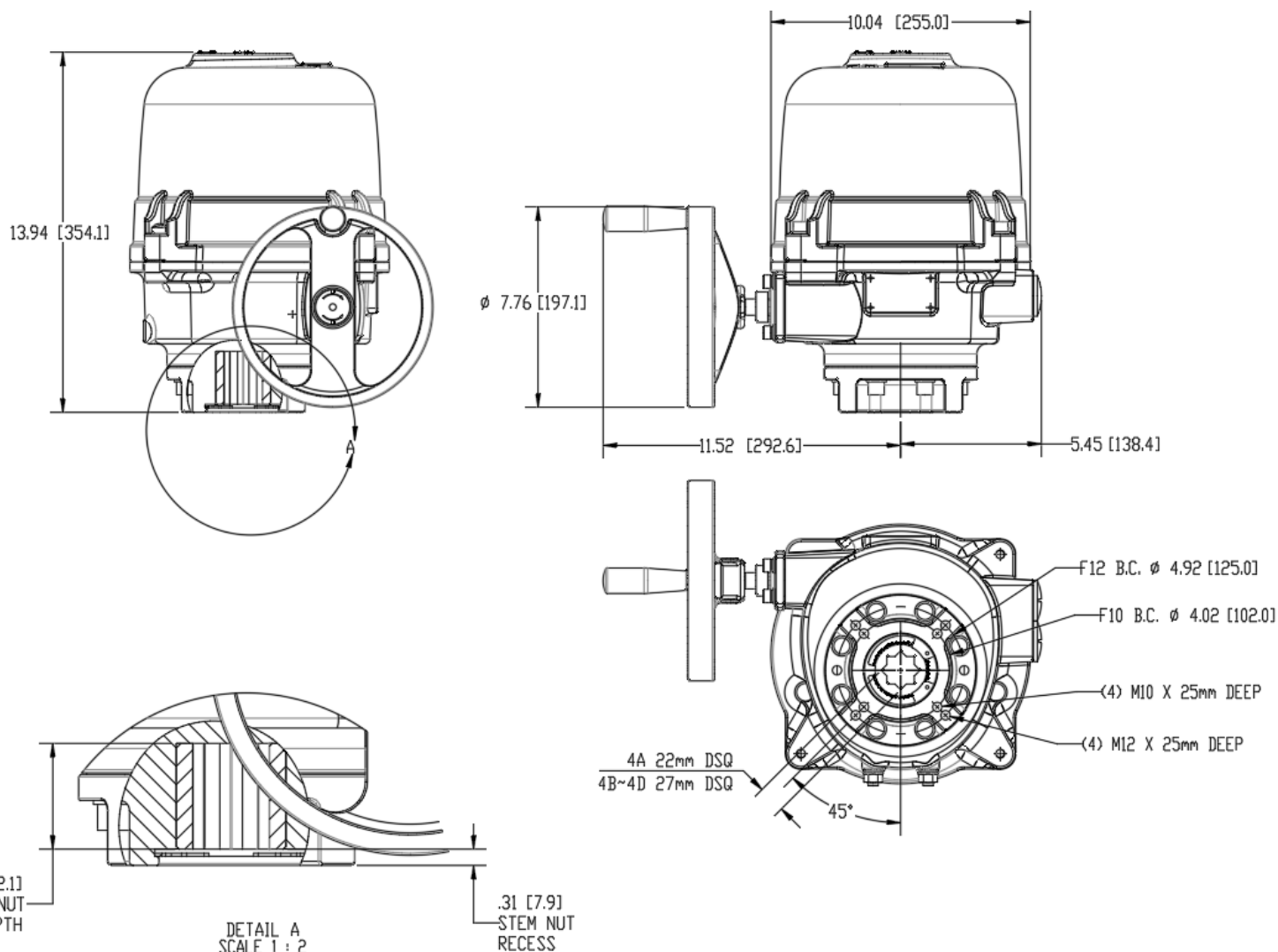
ACTUATOR SPECIFICATIONS		HXBSN4A	HXBSN4B	HXBSN4C	HXBSN4D
Supply	Torque Output (in-lb / Nm)	3540 / 400	5310 / 600	7080 / 800	8850 / 1000
220/3ph	Current Draw (Start / Run / LRA)	1.8A / 1.1A / 2.4A	1.8A / 1.1A / 2.4A	1.8A / 1.1A / 2.4A	2.8A / 1.1A / 2.1A
	Speed (90°) 60Hz / 50Hz, seconds	24 / 29	33 / 39	39 / 47	39 / 47
	Motor - 220V polyphase TE NV	90W	90W	90W	120W
380/3ph	Current Draw (Start / Run / LRA)	1.1A / 0.6A / 1.4A	1.1A / 0.6A / 1.4A	1.1A / 0.6A / 1.4A	1.6A / 0.8A / 1.9A
	Speed (90°) 60Hz / 50Hz, seconds	24 / 29	33 / 39	39 / 47	39 / 47
	Motor - 380V polyphase TENV	90W	90W	90W	120W
480/3ph	Current Draw (Start / Run / LRA)	0.7A / 0.4A / 1.0A	0.7A / 0.4A / 1.0A	0.7A / 0.4A / 1.0A	0.9A / 0.5A / 1.1A
	Speed (90°) 60Hz / 50Hz, seconds	24 / 29	33 / 39	39 / 47	39 / 47
	Motor - 480V polyphase TENV	90W	90W	90W	120W
All	Electrical Entry (2)	3/4" EMT w/ Polyamide dust cap			
	Control	Basic, On/Off, Proportional			
	Auxiliary Switch - End of Travel	(2) Form A Volt-Free, Rated 10A @ 250vac			
	Ambient Operating Range	-40°F to +149°F (-40°C to +65°C)			
	Humidity Range	0-95% RH			
	Altitude Limit	9850 ft / 3000 m			

HXBSN 4A~4D Series Electric Actuators for Hazardous Locations, 3 Phase

TECHNICAL INFORMATION, *CONTINUED*



ATEX / IECEx CERTIFIED
Ex II G Ex db IIB T4 Gb
Ex II D Ex tb IIIC T85°C / T100°C / T135°C Db



MODEL	COVER REMOVAL CLEARANCE		HANDWHEEL		WEIGHT
	IN/MM	IN/MM	# TURNS FOR 90°	LBS/KG	
HXBSN4A	8 / 200	7.76 / 197	14.5 turns 90°	53.9 / 24.5	
HXBSN4B	8 / 200	7.76 / 197	14.5 turns 90°	53.9 / 24.5	
HXBSN4C	8 / 200	7.76 / 197	14.5 turns 90°	53.9 / 24.5	
HXBSN4D	8 / 200	7.76 / 197	14.5 turns 90°	53.9 / 24.5	



Hayward is a registered trademark
of Hayward Industries, Inc.
© 2021 Hayward Industries, Inc.

NPP0821F

USA: 1.888.429.4635 • Fax: 1.888.778.8410 • One Hayward Industrial Drive • Clemmons, NC 27012 • Email: hfcsales@hayward.com
Canada: 1.888.238.7665 • Fax: 1.905.829.3636 • 2880 Plymouth Drive • Oakville, ON L6H 5R4 • Email: hflowcanada@hayward.com
Visit us at: haywardflowcontrol.com