

NEW PRODUCT PREVIEW

HXBSN 4E~4F Series Electric Actuators for Hazardous Locations

KEY FEATURES & BENEFITS

- Designed for use in hazardous locations
- Available from 15,040"lbs up thru 20,350"lbs
- 120VAC operation standard, with 24VAC/VDC, 230VAC and 3 phase options available
- Units are equipped with two (2) volt-free Form A Auxiliary switches
- Anti-Condensate heater standard
- ISO5211 compliant mechanical mount w/ double-square female drive socket
- Two (2) 3/4" EMT ports for ease of field wiring
- NEMA 4/4X/IP66 Compliant
- Visual position indicator
- Clutchless Hand Wheel override standard
- Torque switches standard

Notice: Due to certification regulations and traceability requirements, this product is non-cancellable and non-returnable. Verify the product and certifications are approved for the project prior to ordering.



ATEX / IECEx CERTIFIED
Ex II G Ex db IIB T4 Gb
Ex II D Ex tb IIIC T85°C / T100°C / T135°C Db



TECHNICAL INFORMATION

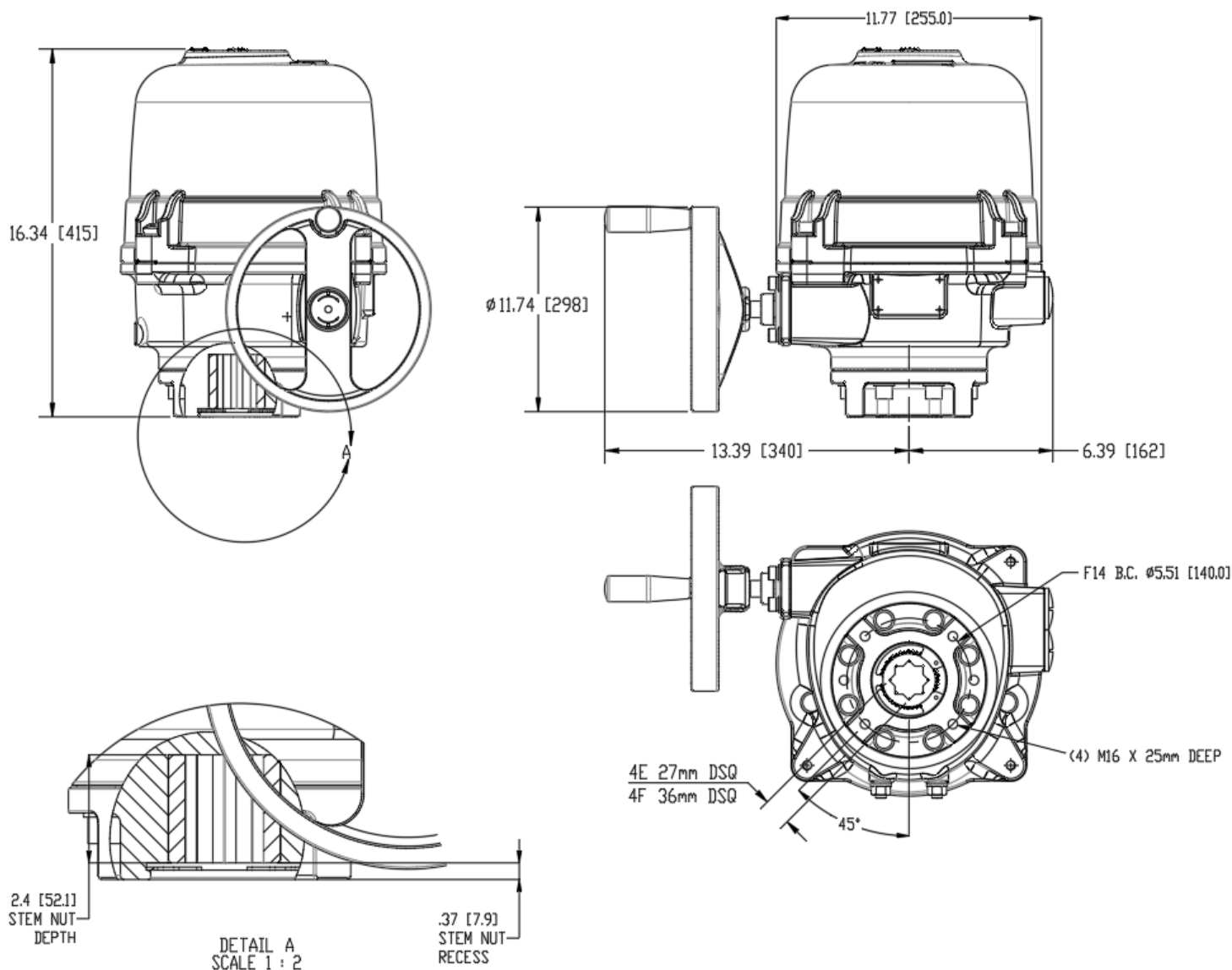
| ACTUATOR SPECIFICATIONS | | HXBSN4E | HXBSN4F |
|-------------------------|---|--|--------------------|
| Supply | Torque Output (in-lb / Nm) | 15,040 / 1700 | 20,350 / 2300 |
| 24VAC | Current Draw (Start / Run / LRA) | 10.5A / 7.8A / 22A | - |
| - | Speed (90°) DC-60Hz/50Hz, seconds | 25 / 25 | - |
| 24VDC | Motor - 24V DC Perm Magnet 2 Pole Brush | 90W | - |
| | Current Draw (Start / Run / LRA) | 7.2A / 4.5A / 9.4A | 7.2A / 4.5A / 9.4A |
| 120VAC | Speed (90°) 60Hz / 50Hz, seconds | 28 / 34 | 39 / 47 |
| | Motor - 120V Capacitor Run TENV | 200W | 200W |
| | Current Draw (Start / Run / LRA) | 4.1A / 2.2A / 4.5A | 4.1A / 2.2A / 4.5A |
| 230VAC | Speed (90°) 60Hz / 50Hz, seconds | 28 / 34 | 39 / 47 |
| | Motor - 230V Capacitor Run TENV | 200W | 200W |
| All | Electrical Entry (2) | 3/4" EMT w/ Polyamide dust cap | |
| | Control | On/Off, Proportional | |
| | Auxiliary Switch - End of Travel | (2) Form A Volt-Free, Rated 10A @ 250vac | |
| | Ambient Operating Range | -40°F to +149°F (-40°C to +65°C) | |
| | Humidity Range | 0-95% RH | |
| | Altitude Limit | 9850 ft / 3000 m | |

HXBSN4E~4F Series Electric Actuators for Hazardous Locations

TECHNICAL INFORMATION, *CONTINUED*



ATEX / IECEx CERTIFIED
Ex II G Ex db IIB T4 Gb
Ex II D Ex tb IIIC T85°C / T100°C / T135°C Db



| COVER REMOVAL CLEARANCE | | HANDWHEEL | | WEIGHT |
|----------------------------|------------|-------------|-----------------|-----------|
| MODEL | IN/MM | IN/MM | # TURNS FOR 90° | LBS/KG |
| HXBSN4E | 9.84 / 250 | 11.42 / 290 | 16 turns 90° | 81.4 / 37 |
| HXBSN4F | 9.84 / 250 | 11.42 / 290 | 16 turns 90° | 81.4 / 37 |



Hayward is a registered trademark
of Hayward Industries, Inc.
© 2021 Hayward Industries, Inc.

NPP0821E

USA: 1.888.429.4635 • Fax: 1.888.778.8410 • One Hayward Industrial Drive • Clemmons, NC 27012 • Email: hfcsales@hayward.com
Canada: 1.888.238.7665 • Fax: 1.905.829.3636 • 2880 Plymouth Drive • Oakville, ON L6H 5R4 • Email: hflowcanada@hayward.com
Visit us at: haywardflowcontrol.com