

NEW PRODUCT PREVIEW

HXZSN 4E~4F Series Electric Actuators for Hazardous Locations

KEY FEATURES & BENEFITS

- Designed for use in hazardous locations
- Available from 15,040"lbs up thru 20,350"lbs
- 120VAC operation standard, with 24VAC/VDC, 230VAC and 3 phase options available
- Units are equipped with two (2) volt-free Form A Auxiliary switches
- Anti-Condensate heater standard
- ISO5211 compliant mechanical mount w/ double-square female drive socket
- Two (2) 3/4" EMT ports for ease of field wiring
- NEMA 4/4X/IP66 Compliant
- Visual position indicator
- Clutchless Hand Wheel override standard
- Torque switches standard

Notice: Due to certification regulations and traceability requirements, this product is non-cancellable and non-returnable. Verify the product and certifications are approved for the project prior to ordering.



Ex d IIC T6 Gb, Ex tb IIIC T135 Db, IP66
Class I, Zone 1, AEx d IIC T6 Gb
Zone 21, AEx tb IIIC T135°C Db



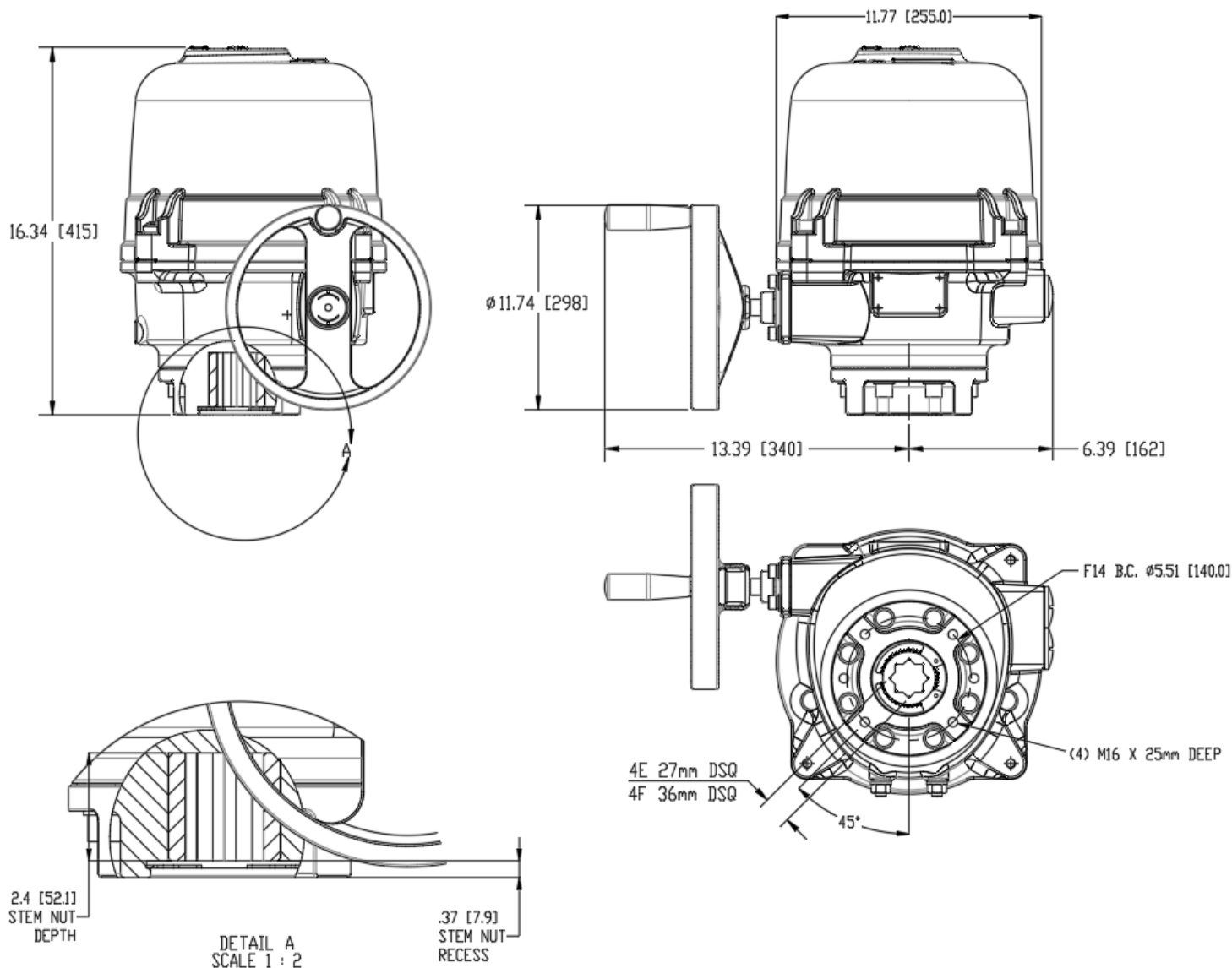
TECHNICAL INFORMATION

ACTUATOR SPECIFICATIONS		HXZSN4E	HXZSN4F
Supply	Torque Output (in-lb / Nm)	15,040 / 1700	20,350 / 2300
24VAC	Current Draw (Start / Run / LRA)	10.5A / 7.8A / 22A	-
-	Speed (90°) DC-60Hz/50Hz, seconds	25 / 25	-
24VDC	Motor - 24V DC Perm Magnet 2 Pole Brush	90W	-
	Current Draw (Start / Run / LRA)	7.2A / 4.5A / 9.4A	7.2A / 4.5A / 9.4A
120VAC	Speed (90°) 60Hz / 50Hz, seconds	28 / 34	39 / 47
	Motor - 120V Capacitor Run TENV	200W	200W
	Current Draw (Start / Run / LRA)	4.1A / 2.2A / 4.5A	4.1A / 2.2A / 4.5A
230VAC	Speed (90°) 60Hz / 50Hz, seconds	28 / 34	39 / 47
	Motor - 230V Capacitor Run TENV	200W	200W
All	Electrical Entry (2)	3/4" EMT w/ Polyamide dust cap	
	Control	On/Off, Proportional	
	Auxiliary Switch - End of Travel	(2) Form A Volt-Free, Rated 10A @ 250vac	
	Ambient Operating Range	-13°F to +149°F (-25°C to +65°C)	
	Humidity Range	0-95% RH	
	Altitude Limit	9850 ft / 3000 m	

HXZSN4E~4F Series Electric Actuators for Hazardous Locations

TECHNICAL INFORMATION, *CONTINUED*

Ex d IIC T6 Gb, Ex tb IIIC T135 Db, IP66
Class I, Zone 1, AEx d IIC T6 Gb
Zone 21, AEx tb IIIC T135°C Db



COVER REMOVAL CLEARANCE		HANDWHEEL		WEIGHT
MODEL	IN/MM	IN/MM	# TURNS FOR 90°	LBS/KG
HXZSN4E	9.84 / 250	11.42 / 290	16 turns 90°	81.4 / 37
HXZSN4F	9.84 / 250	11.42 / 290	16 turns 90°	81.4 / 37



Hayward is a registered trademark
of Hayward Industries, Inc.
© 2021 Hayward Industries, Inc.

NPP0821L

USA: 1.888.429.4635 • Fax: 1.888.778.8410 • One Hayward Industrial Drive • Clemmons, NC 27012 • Email: hfcsales@hayward.com
Canada: 1.888.238.7665 • Fax: 1.905.829.3636 • 2880 Plymouth Drive • Oakville, ON L6H 5R4 • Email: hflowcanada@hayward.com
Visit us at: haywardflowcontrol.com