

NEW PRODUCT PREVIEW

HXBSN 4A~4D Series Electric Actuators for Hazardous Locations

KEY FEATURES & BENEFITS

- Designed for use in hazardous locations
- Available from 3540”lbs up thru 8850”lbs
- 120VAC operation standard, with 24VAC/VDC, 230VAC and 3 phase options available
- Units are equipped with two (2) volt-free Form A Auxiliary switches
- Anti-Condensate heater standard
- ISO5211 compliant mechanical mount w/ double-square female drive socket
- Two (2) 3/4” EMT ports for ease of field wiring
- NEMA 4/4X/IP66 Compliant
- Visual position indicator
- Clutchless Hand Wheel override standard
- Collapsible spinner handle
- Torque switches standard

Notice: Due to certification regulations and traceability requirements, this product is non-cancellable and non-returnable. Verify the product and certifications are approved for the project prior to ordering.



ATEX / IECEx CERTIFIED
Ex II G Ex db IIB T4 Gb
Ex II D Ex tb IIIC T85°C / T100°C / T135°C Db


TECHNICAL INFORMATION

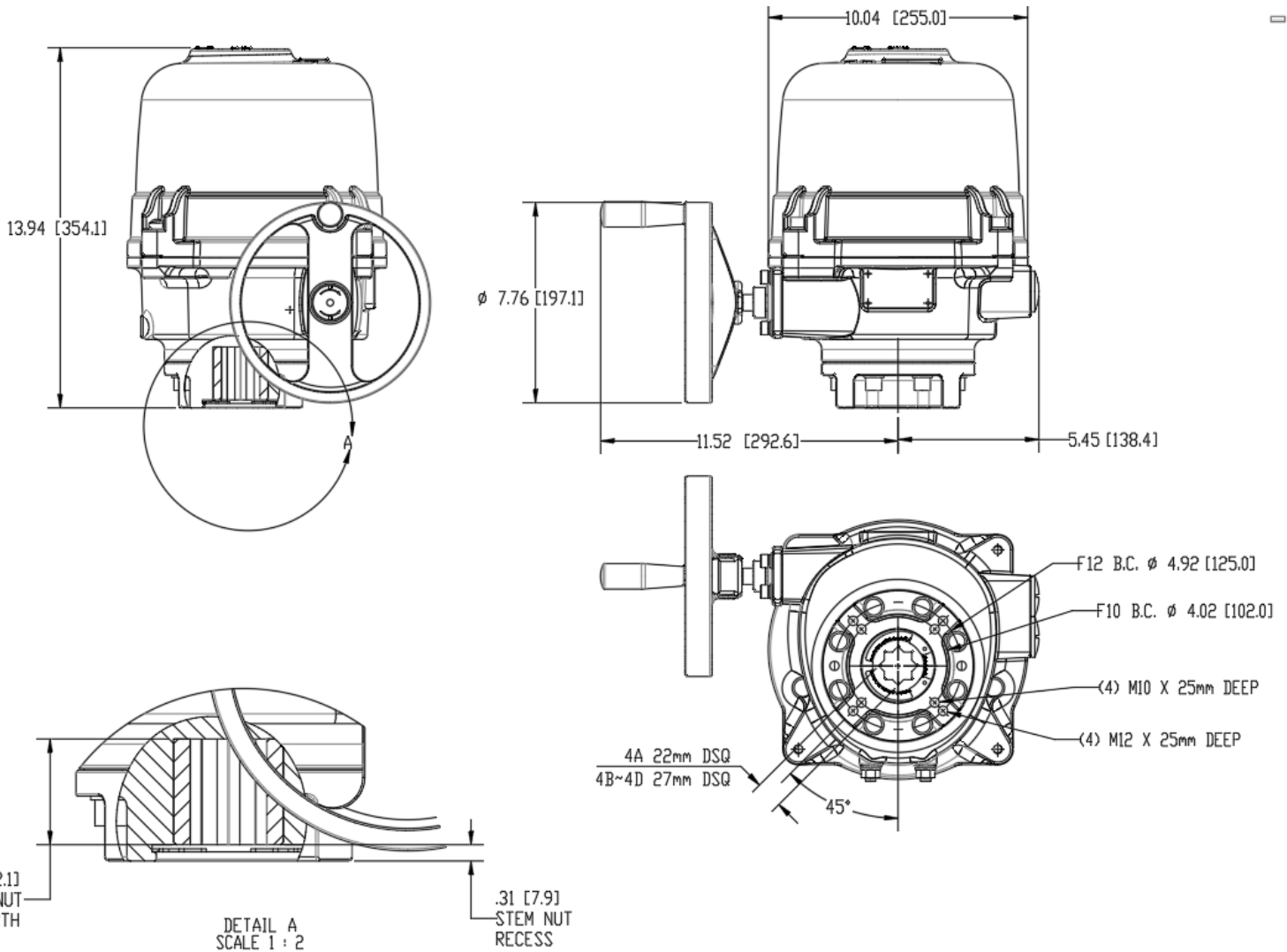
| ACTUATOR SPECIFICATIONS | | HXBSN4A | HXBSN4B | HXBSN4C | HXBSN4D |
|-------------------------|---|--------------------|--|--------------------|--------------------|
| Supply | Torque Output (in-lb / Nm) | 3540 / 400 | 5310 / 600 | 7080 / 800 | 8850 / 1000 |
| 24VAC | Current Draw (Start / Run / LRA) | 7.0A / 5.8A / 15A | 7.0A / 5.8A / 15A | 7.0A / 5.8A / 15A | 10.5A / 7.8A / 22A |
| - | Speed (90°) DC-60Hz/50Hz, seconds | 21 / 21 | 28 / 28 | 34 / 34 | 34 / 34 |
| 24VDC | Motor - 24V DC Perm Magnet 2 Pole Brush | 40W | 40W | 40W | 90W |
| 120VAC | Current Draw (Start / Run / LRA) | 3.0A / 1.8A / 3.5A | 3.0A / 1.8A / 3.5A | 3.0A / 1.8A / 3.5A | 3.8A / 2.3A / 4.8A |
| | Speed (90°) 60Hz / 50Hz, seconds | 24 / 29 | 33 / 39 | 39 / 47 | 39 / 47 |
| | Motor - 120V Capacitor Run TENV | 90W | 90W | 90W | 120W |
| 230VAC | Current Draw (Start / Run / LRA) | 1.7A / 0.9A / 1.9A | 1.7A / 0.9A / 1.9A | 1.7A / 0.9A / 1.9A | 2.2A / 1.1A / 2.4A |
| | Speed (90°) 60Hz / 50Hz, seconds | 24 / 29 | 33 / 39 | 39 / 47 | 39 / 47 |
| | Motor - 230V Capacitor Run TENV | 90W | 90W | 90W | 120W |
| All | Electrical Entry (2) | | 3/4" EMT w/ Polyamide dust cap | | |
| | Control | | On/Off, Proportional | | |
| | Auxiliary Switch - End of Travel | | (2) Form A Volt-Free, Rated 10A @ 250vac | | |
| | Ambient Operating Range | | -40°F to +149°F (-40°C to +65°C) | | |
| | Humidity Range | | 0-95% RH | | |
| | Altitude Limit | | 9850 ft / 3000 m | | |

HXBSN 4A~4D Series Electric Actuators for Hazardous Locations

TECHNICAL INFORMATION, CONTINUED



ATEX / IECEx CERTIFIED
 Ex II G Ex db IIB T4 Gb
 Ex II D Ex tb IIIC T85°C / T100°C / T135°C Db



| MODEL | COVER REMOVAL CLEARANCE | | HANDWHEEL | | WEIGHT |
|---------|-------------------------|------------|-----------------|-------------|--------|
| | IN/MM | IN/MM | # TURNS FOR 90° | LBS/KG | |
| HXBSN4A | 8 / 200 | 7.76 / 197 | 14.5 turns 90° | 53.9 / 24.5 | |
| HXBSN4B | 8 / 200 | 7.76 / 197 | 14.5 turns 90° | 53.9 / 24.5 | |
| HXBSN4C | 8 / 200 | 7.76 / 197 | 14.5 turns 90° | 53.9 / 24.5 | |
| HXBSN4D | 8 / 200 | 7.76 / 197 | 14.5 turns 90° | 53.9 / 24.5 | |

 Hayward is a registered trademark of Hayward Industries, Inc. © 2021 Hayward Industries, Inc.

NPP0821D

USA: 1.888.429.4635 • Fax: 1.888.778.8410 • One Hayward Industrial Drive • Clemmons, NC 27012 • Email: hfcsales@hayward.com
 Canada: 1.888.238.7665 • Fax: 1.905.829.3636 • 2880 Plymouth Drive • Oakville, ON L6H 5R4 • Email: hfcanada@hayward.com
 Visit us at: haywardflowcontrol.com