

A Series LifeStar® XE Aquatic Pump

6 SPEED 1225 - 3450 RPM 1.85 & 2.25 HP
SINGLE PHASE 115V/230V, ODP

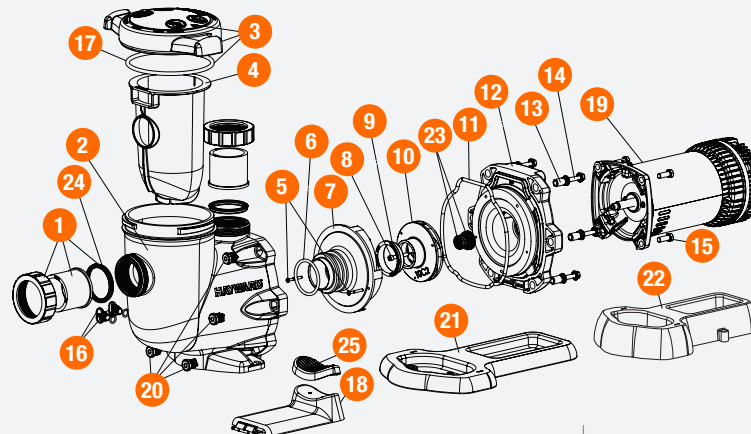
KEY FEATURES

- Ideal for Sensitive Aquatic Environments or Salt Water Systems
- Programmable over 6 Selectable Speeds
- All Wetted Hardware Manufactured from 316 Stainless Steel
- Silicon Carbide/Silicon Carbide Shaft Seal Suitable for Fresh and Salt Water Use
- Corrosion Resistant GFPP Pump Housing
- Self-Priming Pump
- Clear Basket Strainer Lid for Visual Inspection
- Elevated Base Ensures Better Ventilation and Protection from Flooding
- Perforated 1/8" HDPE Strainer Basket
- Dual Voltage for Greater Install Versatility
- Drop-in Replacement for any existing Lifestar® Installation
- 2" Socket x 2-1/2" Spigot PVC True Union Connections Included



TECHNICAL INFORMATION

EXPLODED VIEW



SPECIFICATIONS

PUMP HOUSING	GFPP Cell Class 85580 per ASTM D4101	MOTOR BOLTS	316 SS
CONNECTIONS	2" Socket x 2-1/2" Spigot, PVC	HOUSING BOLTS	316 SS
MOTOR SHAFT	303 SS (Non-Wetted)	MOTORS	Single Phase - Open Drip Proof (ODP)
SHAFT FACE SEAL	Silicon Carbide/Silicon Carbide	HP RATINGS	1.85 (1A3SES16XE) & 2.25 (1A3SES17XE)
SHAFT SECONDARY SEAL	EPDM	STRAINER BASKET	HDPE, 1/8" Perf
ALL WETTED HARDWARE	316 SS (Impeller Insert, Impeller Screw and Diffuser Screws)	VOLTAGE SUPPLY	115V/230V 60 Hz
MAIN HOUSING GASKET	EPDM		

A Series LifeStar® XE Aquatic Pump

6 SPEED 1225 - 3450 RPM 1.85 & 2.25 HP

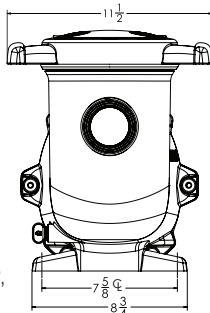
SINGLE PHASE 115V/230V, ODP

TECHNICAL INFORMATION, *CONTINUED*

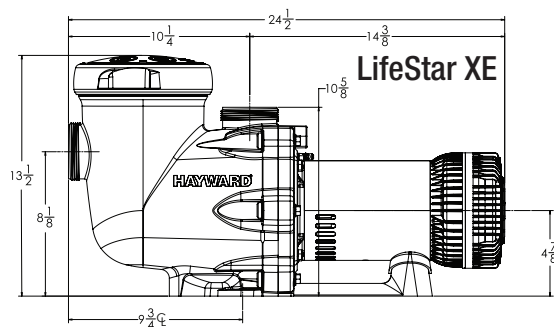
PARTS LIST

1. True Union Connection and Nut with O-Ring
2. Pump Strainer Housing
3. Strainer Cover
4. Strainer Basket
5. Diffuser Screw
6. Diffuser O-Ring
7. Diffuser
8. Impeller Screw, 316SS
9. Impeller Ring
10. Impeller
11. Housing Seal
12. Seal Plate
13. Seal Plate Spacer, 316SS
14. Housing Bolt, 316SS
15. Motor Bolts, 316SS
16. Drain Plug with O-Ring
17. Strainer O-Ring
18. Motor Support
19. Motor
20. Housing Insert, 316SS
21. Optional Riser Base (aligns with Pentair® WhisperFlo®)
22. Optional Riser Base (aligns with St-Rite® Max-E-Pro™, Max-E-Glas®, Dura-Glas®)
23. Shaft Seal Assembly
24. Union Gasket
25. Motor Support Adaptor

DIAGRAM

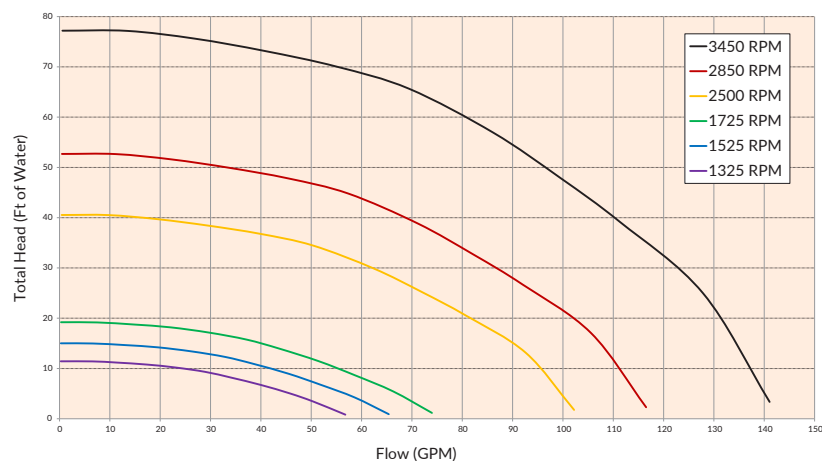


Dimensions are subject to change without notice - consult factory for installation information.

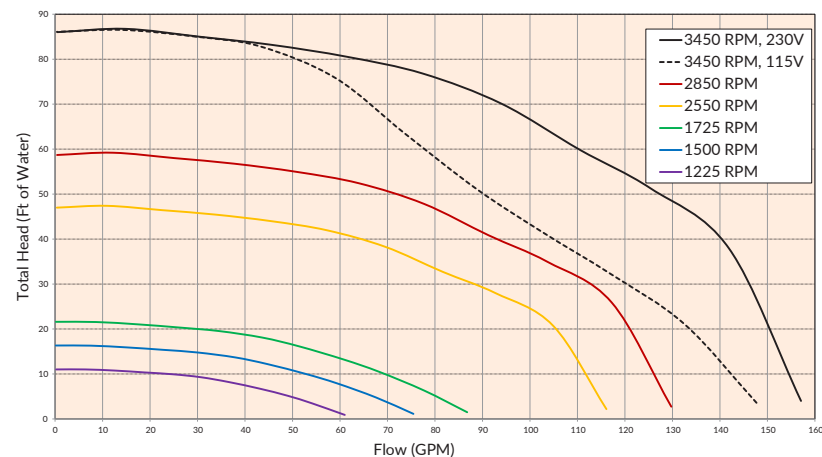


PUMP PERFORMANCE CURVE AT 60HZ

1.85 HP

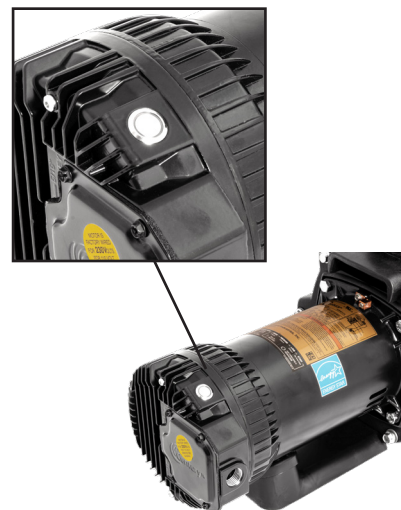


2.25 HP



SINGLE BUTTON PROGRAMMING

Push button and LED indicator ring located on motor housing. 24 hour programmable daily schedule with up to 6 speed selections with one-push motor speed override mode.



PUMP MODEL REPLACEMENT CHART

HORSEPOWER	NEW LIFESTAR® XE	REPLACES LIFESTAR® A-SERIES
1.85 HP	1A3SES16XE	1A3SES13 1A3SES14 1A3SES15 1A3SES16
2.25 HP	1A3SES17XE	1A3SES17



Hayward is a registered trademark of Hayward Industries, Inc.
© 2022 Hayward Industries, Inc.

USA: 1.888.429.4635 • Fax: 1.888.778.8410 • One Hayward Industrial Drive • Clemmons, NC 27012 • Email: hfcsales@hayward.com
Canada: 1.888.238.7665 • Fax: 1.905.829.3636 • 2880 Plymouth Drive • Oakville, ON L6H 5R4 • Email: hflowcanada@hayward.com
Visit us at: haywardflowcontrol.com