

The image is a two-part cover for a mining guide. The top half features a wide-angle landscape of a mining operation at sunset, with a large rock in the foreground and a winding road through a valley. The bottom half shows a close-up of a worker's hand holding a hard hat, with a large crane and industrial structures in the background under a cloudy sky.

HAYWARD® | **TRUE GRIT**

MINING GUIDE



CRITICAL INFRASTRUCTURE REQUIRES TRUSTED SOLUTIONS WITH PROVEN PERFORMANCE AND SAFETY.

At Hayward Flow Control, we understand the magnitude and impact water has in our everyday life. Equally important? Safety, efficiency and reliability. There's no margin for error. **That's why we leave nothing to chance.**

Hayward® Flow Control has been a leading manufacturer of industrial thermoplastic valves and process control products for more than 60 years. In fact, Hayward was one of the originators of the first thermoplastic ball valves. Since then, we have remained committed to producing the highest quality products while providing outstanding service. All Hayward products are made in America under the most stringent standards to serve a global population.

From highly caustic chemicals to municipal waste and water systems, from data center piping systems to offshore oil transport – we've tackled some of the world's biggest and most complex flow control challenges with proven reliability.





WORLD CLASS QUALITY

As an ISO 9001:2015 certified company, Hayward Flow Control adheres to the strictest guidelines relative to component manufacture, assembly and testing. We employ the latest manufacturing technologies and continue to invest in new equipment and tooling. Our reputation for quality and reliability is unmatched. In addition to a tradition of quality and expertise, Hayward's highly qualified field sales organization also provides customer assistance, training and field support.

TRUSTED DELIVERY & RESULTS

Hayward specializes in large-scale flow control — and large-scale production. With US-based operations, we offer distribution on both coasts for what you need, when you need it, without waiting for an import.

THERMOPLASTIC VS. METAL VALVES MINING APPLICATIONS: HOW DO THEY COMPARE?

No matter how tight your timing – or your budget – Hayward thermoplastic products offer clear and long-term benefits over traditional metal valves.

CONSIDER THESE TOTAL-COST-OF-OWNERSHIP BENEFITS:

	THERMOPLASTIC VALVES	METAL VALVES
SERVICE LIFE	30+ years	<15
LIFETIME EFFICIENCY	Consistently reliable over the life of the product	Efficiency decreases over time
LIFETIME MAINTENANCE	Longer life means less maintenance	As efficiency decrease, maintenance increase
CARBON FOOTPRINT	Outperform metal in every category	Shorter service life means more waste
CORROSION RESISTANCE	Won't scale or tuberculate like metal Resistant to solvents, acids and alkali	Susceptible to scaling, tuberculation and deterioration
WEIGHT	6x lighter	Heavy to transport and install
TRANSPORTATION COSTS	Lighter weight means <cost	Heavier weight results in increase costs and environmental impacts. Castings often from overseas
INSTALLATION TIME	Lighter weight streamlines overhead installation	Increased weights may require crane or a second person, adding time to install
SODIUM HYPOCHLORITE	Suitable with TBH-Z Series	Not suitable in Sodium Hypochlorite applications

RUGGED, DURABLE HAYWARD FLOW CONTROL PRODUCTS ARE BUILT TO WORK IN THE TOUGHEST ENVIRONMENTS SERVING THE MOST CRITICAL INFRASTRUCTURE NEEDS – INCLUDING YOURS.

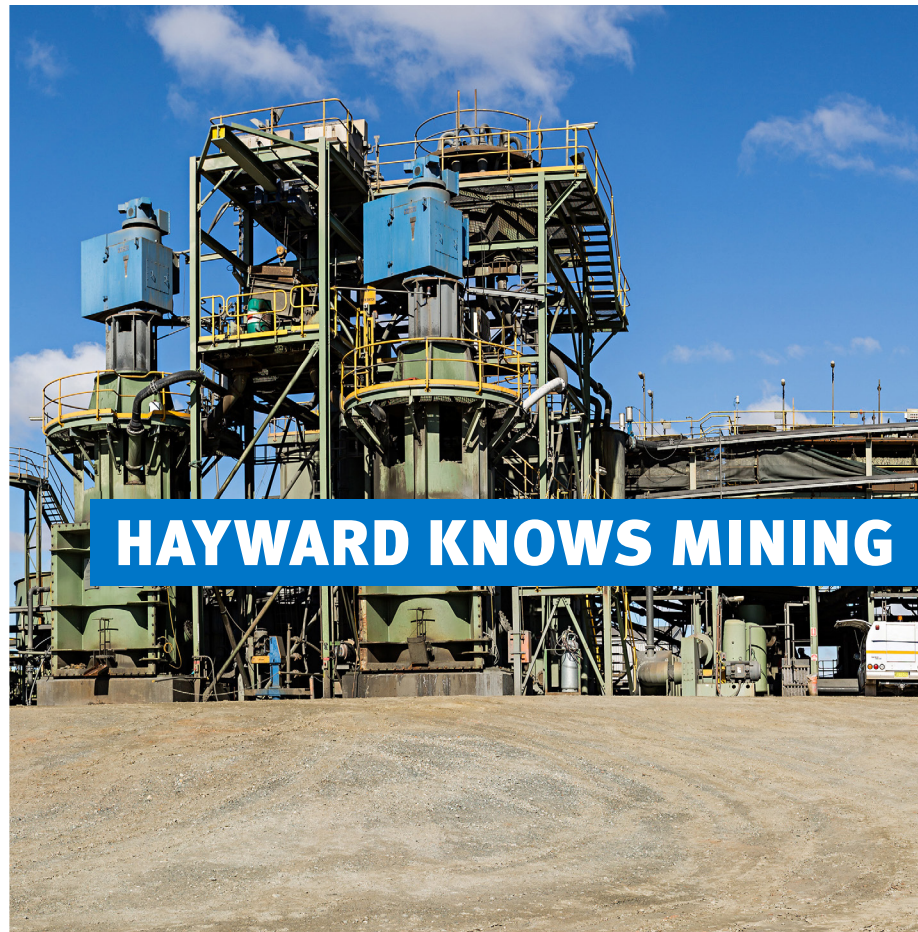


BUILT BETTER FROM THE INSIDE OUT

SAFETY, CONTROL AND PERFORMANCE. THE FLV SERIES BAG FILTERS ARE UNDENIABLY THE LEADER OF THE PACK:

- Hayward's FLV Series Bag and Cartridge Filters are engineered with a rugged one-piece injection molded body made with GFPP (Glass-filled polypropylene) making them ideal for outdoor service with enhanced UV protection.
- The FLV Series features durable true union end connections, an ergonomic cover with a liquid displacing dome, vent valve, and drain plug, all designed to handle demanding industrial environments.
- Available with multiple end connection options for specific piping systems, as well as Simplex, Duplex or Manifold assemblies
- Made in the U.S.A under strict ISO quality standards means shorter lead times, less operational downtime and trusted performance.

Hayward Flow Control isn't your run-of-the-mill thermoplastic flow controls manufacturer. We stand alone in offering the leading American solution with engineering, manufacturing, customer support and tech services all under the same roof: right in your backyard. Tired of overseas lead times? With manufacturing on American soil, Hayward Flow Control is well equipped to meet your needs, all with a global, industry-leading three-year warranty.



TBH SERIES

True Union Ball Valves

1/2" to 6" / DN8-150 PVC, CPVC



KEY FEATURES

- Full Port Design
- System2™ Sealing Technology provides longer cycle life, 1/4" - 2"
- 250 PSI / 16 Bar, non-shock at 70°F / 23°C full pressure rating, 1/4" - 2"
- 235 PSI / 16 Bar, non-shock at 70°F / 23°C full pressure rating, 2-1/2" - 4"
- 150 PSI / 10 Bar, non-shock at 70°F / 23°C full pressure rating, 6"
- Lockout/Tagout mechanism that secures directly to valve body for enhanced safety
- Ergonomic handle for improved grip and comfort
- ISO 5211 top flange simplifies actuation
- Permanent markings, eliminates labels
- Integral footpad for skid or panel mount
- FPM or EPDM seals
- Double O-Ring stem seals
- Reversible PTFE seats – Standard

OPTIONS

- Pneumatic or Electric Actuators
- Stem Extensions
- Manual Limit Switch

MATERIALS

— BODY — SEALS — SEATS



Patented. U.S. Patent No. 11,131,404 & 11,649,899.
Other Patents Pending

TB SERIES

Ball Valves

1/4" - 2" / DN15-150 GFPP, PVDF



KEY FEATURES

- Available in sizes 1/4" - 2"
- Available with Threaded or Socket Fusion (IPS) Ends
- Full Port Design
- FPM O-Ring Seals Standard
- Reversible PTFE Seats
- Double O-Ring Stem Seals
- Available with Electric or Pneumatic Actuation
- Natural PVDF per ASTM D3222 Type 1

MATERIALS

— BODY — SEALS — SEATS



TWH/TPH/TNH SERIES

Three-Way True Union Ball Valves

1/2" to 6" / DN15-150 PVC, CPVC



KEY FEATURES

- ISO5211 ISO Top Works for Ease of Actuation
- Lockout/Tag-out Mechanism Secures Directly to Valve Body
- Ergonomic Handle for Improved Grip and Comfort
- Available in PVC and CPVC
- PTFE Seats
- FPM or EPDM O-Rings
- Double O-Ring Stem Seal Design
- Permanent Ball Port Indicators on Handle
- Direct Replacement for TW Series True Union Three-Way Ball Valve in service

LAH/LNH SERIES

Lateral Three-Way True Union Ball Valves

1/2" to 6" / DN15-150 PVC, CPVC



KEY FEATURES

- ISO5211 ISO Top Works for Ease of Actuation
- Lockout/Tag-out Mechanism Secures Directly to Valve Body
- Ergonomic Handle for Improved Grip and Comfort
- Available in PVC and CPVC
- PTFE Seats
- FPM or EPDM O-Rings
- Double O-Ring Stem Seal Design
- Permanent Ball Port Indicators on Handle
- Direct Replacement for LA Series True Union Three-Way Ball Valve in service

BYV SERIES

Butterfly Valves

2" to 12" / DN50-300 PVC,
CPVC, GFPP with PVDF Disc



KEY FEATURES

- One Piece Injection Molded Body
- Hand Lever with 19 Lockable Stop Positions & 360° Interlocking Splines
- External Disc Position and Flow Indication
- Hydro-dynamic Centric Disc for Increased Flow Performance
- Over-Sized Liner Face Maximizes Surface Contact with Flanges
- 1-Piece 316 Stainless Steel Stem with Threaded Retaining Gland
- Stem Bearing and Seal Retainer for Absolute Stem Position and Seal
- ISO 5211 Top Flange and Stem Drive
- All Sizes Meet ANSI B16.10 / ISO 5752 Face to Face Dimensions
- Pressure Rated at 150 PSI/10 Bar in All Sizes @ 70°F Non-Shock
- **BYB Series Large Diameter Butterfly Valves:** 14" to 24" available in PVC, CPVC, PP and PVDF

OPTIONS

- Over-Molded 316 Stainless Steel Lugs
- Titanium or Hastelloy™ Stem Materials
- Gear Operators
- Complete Range of Pneumatic or Electric Actuators
- Lock Out Caps
- Stem Extensions
- Chain Operator for Gear Box

MATERIALS

BODY				LINER			
GFPP	*PLATINUM	PVC	CPVC	VITON®	EPDM	NITRILE	PVDF

*Disc only

*Disc only



Certified to NSF/ANSI 61 & 372,
PVC/EPDM 2" - 12", CPVC/EPDM 4" - 12"

"Patented & Other Patents Pending" Pat. No.: 9,695,947

9,989,154, 10,683,937, 10,683,938, 10,690, 252 & 11,092,242

HRS SERIES

Industrial Electric Actuators

266 - 177,000 Torque in/lbs



KEY FEATURES

- Units are equipped with two (2) volt-free Form A Auxiliary switches
- ISO5211 compliant mounting with a double square female drive socket
- Raised visual position indicator
- NEMA 4X/IP67 compliant
- EMT entry ports with sealed cable glands
- Internal Heater Standard
- Manual Override
- Class Zone and Class Div now Available
- Available Voltages 12VAC/VDC, 24VAC/VDC, 120/230VAC

OPTIONS

- Power Supply Flexibility
- On / Off or Proportional Control
- Local Control Stations
- IP68 Submersion
- Battery Backup
- Supercap Backup
- Interchangeable ISO5211 Flange & Drives

Local Control Station



Battery Backup



ECP SERIES

Industrial Electric Actuators

Ball & Butterfly Valves up
to 6" / DN150



KEY FEATURES

- Ideal for Corrosive Atmosphere and Environments
- Corrosion-Resistant GFPP Housing
- LED Status Light
- Anti-Condensation Heater
- Manual Override
- Position Indicator
- 4 SPDT Micro Limit Switches
- Lightweight - Easy for Installation
- ISO 5211 Mounting Base
- Stainless Steel Fasteners 303 SS
- 100% Factory Tested
- Single Phase 24~265VAC/VDC

OPTIONS

- Digital Positioner 0-20mA, 4-20mA or 0-10V
- Battery Backup

NEUMATIC ACTUATION BY HAYWARD

Hayward Flow Control offers a full line of Pneumatic Actuation including the compact PC Series Pneumatic Actuators. Perfect for those tight spaces and applications that require a lightweight, highly adjustable solution. Four-piston rack and pinion design in both double-acting and fail-safe spring return. Head to our website to learn more!



PS Series

SW SERIES

Swing Check Valves

2" to 8" / DN50-200 PVC & CPVC



KEY FEATURES

- Available in PVC, CPVC and GFPP
- High Temperature/Pressure Ratings
- Horizontal or Vertical Installation
- Two-in-One Seat Design
- Built-in Flange Seals
- Two Drain Ports
- Self-Aligning Clapper Seals
- High Cv Rating and Full Flow Design

OPTIONS

- Counterweight for Closing Assistance
- Limit Switch for Position Indication

MATERIALS

BODY			SEALS	
GFPP	PLATINUM	PVC	CPVC	EPDM

WCV SERIES

Full Pattern Wafer Check Valves

2" to 8" / DN50-200 PVC & CPVC



KEY FEATURES

- Robust Full Pattern Body
- Available in PVC and CPVC
- Pressure Rated at 150 PSI/10 Bar in All Sizes @ 70°F Non-Shock
- No Special Spacers or Flanges Required
- High Cv Rating Equal to Metal Check Valves, Saves on Energy and Pump Wear
- FPM or EPDM Gasket and Face Seal
- One-Piece Disc and Shaft Design

OPTIONS

- 316 Stainless Steel or Hastelloy® Disc Spring

MATERIALS

BODY		SEALS	
PVC	CPVC	FPM	EPDM



10" WCV

Patent No. 8,887,757 & 12,066,118"

YC SERIES

Y-Check Valves

1/2" to 4" / DN15-100 PVC, CPVC

1/2" to 1" / DN15-25 PVDF



KEY FEATURES

- Available in PVC, CPVC, and PVDF
- Pressure Rated at 150PSI/10 Bar in All Sizes @ 70°F Non-Shock
- Horizontal or Vertical Installation
- Molded-In or True Union Socket or Threaded Connections
- Full Flow Design
- Minimal Back Pressure Required to Seat Piston
- PVC, CPVC or PVDF Coil to Guide Piston to a Positive Seat

MATERIALS

BODY			SEALS	
PVC	CPVC	PVDF	FPM	EPDM

HAYWARD CHECK VALVES

For more check valve solutions from Hayward Flow Control, visit our website to learn more about our full line of ball and Y-pattern checks as well as TC Series, True Union Ball Check Valves.



TC Series True Union Ball Check Valves

YS SERIES

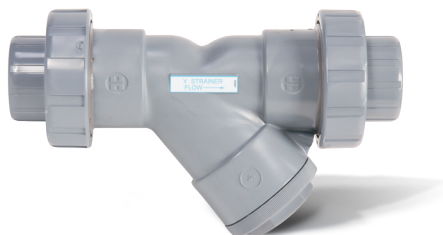
Y-Strainers

1/2" to 2" / DN15-50

PVC, CPVC, CLEAR PVC

2-1/2" to 4" / DN65-100 PVC, CPVC

1/2" to 1" / DN15-25 PVDF



KEY FEATURES

- Available in PVC, CPVC, Clear PVC and PVDF
- Pressure Rated at 150 PSI/10 Bar in All Sizes @ 70°F Non-Shock
- For Horizontal or Vertical Installation
- Molded-In or True Union Socket or Threaded End Connections
- FPM or EPDM Seals
- 2:1 Open Area Ratio
- Hex Cap for Easy Access to Screen
- Standard Screen 1/32" Perforation*

*Standard PVDF Screen Has 3/32" Perforation

OPTIONS

- Stainless Steel or other Alloys Perf or Mesh
- Strainer Screens Available in Various Sizes

MATERIALS

BODY				SEALS	
PVC	CPVC	CLEAR PVC	PVDF	FPM	EPDM

SB SERIES

Simplex & Duplex Basket Strainers

1/2" to 4" / DN15-100

PVC, CPVC, GFPP, and Eastar® 6" to 8" / DN150-200

PVC, CPVC 1/2" to 2" / DN15-50

PVDF



KEY FEATURES

- PVC, CPVC, GFPP, PVDF and Eastar®
- Pressure Rated at 150 PSI/10 Bar in All Sizes @ 70°F Non-Shock
- Ergonomic Hand Removable Cover
- In-Line or Loop Connections
- External Cover Threads
- Integral Flat Mounting Bases
- Thermoplastic Baskets Standard
- Ideal for protecting pumps and other critical system equipment

OPTIONS

- Stainless Steel, Monel®, Hastelloy® and Titanium Strainer Baskets
- Pressure Differential Gauge and Switch for 6" and 8" / DN150-200 Sizes
- Baskets Available with Perforated or Mesh Liners

MATERIALS

BODY				SEALS			
GFPP	PLATINUM	PVC	CPVC	EASTAR®	PVDF	FPM	EPDM



Certified to NSF/ANSI 61 & 372
PVC and CPVC

FLV/CFLV SERIES

Simplex & Duplex Bag/Cartridge Filters

Single Length 1-1/4" - 2" / DN32-50

GFPP, PVC, CPVC

Double Length 2-1/2" - 4" DN65-100

GFPP, PVC, CPVC



KEY FEATURES

- GFPP, PVC or CPVC Material
- Heavy Duty Injection Molded Construction with True Union Design
- True Union End Connections - Socket, Threaded or Flanged
- Solid Heavy-Duty Basket Standard
- Hand Removable Ergonomic Cover with Liquid Displacing Dome
- Vent Valve on Cover
- In-Line or Loop Configuration
- Drain Port at Bottom
- Integral Mounting Base

OPTIONS

- Pressure Differential Gauge and Switch
- EPDM Seals
- Cartridge Adapters - CFLV only
- Duplex Configurations

SYSTEM PROTECTION

Hayward offers a full line of Pressure Differential Gauge kits to help better protect your vital systems from damage. Pressure Differential Gauges indicate when to clean, change or replace your bag filter or strainer.



MATERIALS

BODY			SEALS	
GFPP	PVC	CPVC	FPM	EPDM

"Patented" Pat. No.:9,630,127

PBV SERIES

Back Pressure Valves

1/2" to 4" / DN8-100 PVC, CPVC, PP, and PVDF



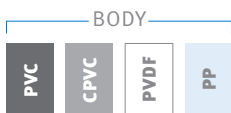
KEY FEATURES

- Available in PVC, CPVC, PP or PVDF Body with Noryl™ Molded Dome
- PTFE/EPDM Diaphragm
- Spring: 10-150 psi (Spring pre-set: 50 psi)
- 304 Stainless Steel Bolting
- FNPT or Socket 1/4"-2", Flange 3"-4"
- Anti-Siphon Function
- Adjustment Screw with Slot
- PVC, CPVC and PVDF rated to 250 psi @ 70 F/17.2 Bar at 21 C, PP rated to 150 psi @ 70 F/10 Bar at 21 C

OPTIONS

- ANSI or DIN/EN Threaded, Socket, True Union Socket or Flanged End Connections
- 0-50 psi and 10-250 psi Springs
- PTFE/FPM Diaphragm

MATERIALS



RPV SERIES

Pressure Relief Valves

1/2" to 4" / DN8-100 PVC, CPVC, PP, and PVDF



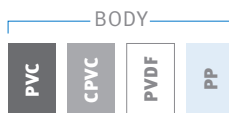
KEY FEATURES

- Available in PVC, CPVC, PP or PVDF Body with Noryl™ Molded Dome
- PTFE/EPDM Diaphragm
- Spring: 10-150 psi (Spring pre-set: 50 psi)
- 304 Stainless Steel Bolting
- FNPT Threads
- Adjustment Screw with Slot
- PVC, CPVC and PVDF rated to 250 psi @ 70 F/17.2 Bar at 21 C, PP rated to 150 psi @ 70 F/10 Bar at 21 C

OPTIONS

- 2-port / 900
- ANSI or DIN/EN Threaded, Socket, True Union Socket or Flanged End Connections
- 0-50 psi and 10-250 psi Springs
- PTFE/FPM Diaphragm

MATERIALS



CS SERIES

Corporation Stops

1/2" to 1" PVC and CPVC



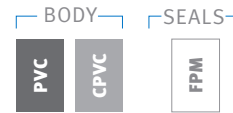
KEY FEATURES

- True Union Thermoplastic Ball Valve with PTFE Seats
- Thermoplastic Injection Quill with Beveled Tip
- 316SS Chain and Hardware
- Variable and Customer Injector Lengths
- Ball Check Valve with FPM O-Rings
- Standard MNPT and Threaded True Union End Connections
- Pressure rated to 150 psi @ 70 F/10 Bar at 21 C

OPTIONS

- Flat Tip
- Socket True Union, Metric Socket or BSPT Threaded End Connections
- EPDM O-Ring Seals
- PTFE/FPM Diaphragm

MATERIALS



IV/IQ SERIES

Injection Valves/Quills

IV: 1/2" to 2" PVC, CPVC and PVDF

IQ: 1/2" to 1" PVC, CPVC and PVDF



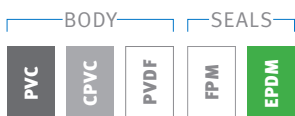
KEY FEATURES

- Built-in ball check valve with Hastelloy C™ spring, with the IV check being rebuildable
- Threaded MNPT End Connections
- FPM O-Ring Seals
- 45° Bevel on Quill Tip
- Pressure rated to 150 psi @ 70°F

OPTIONS

- Flat Bevel
- Socket End Connections
- EPDM O-Ring Seals, IV Series only

MATERIALS



NVA SERIES

Needle Valves

1/4" to 1/2" PVC, CPVC, GFPP, and PVDF



KEY FEATURES

- Available in PVC, CPVC, GFPP and PVDF
- Integrated Stem/PTFE Seat Design
- Flanges for Panel Mounting
- NPT Threaded Ends
- Accurate Flow Control
- Fine Pitch Stem Threads for Precise Adjustment
- Adjust Flow Rates Down to Drops per Minute
- Ideal for Metering Flow

MATERIALS



Patented. U.S. Patent No. 9,506,569

Z SERIES

Solenoid Diaphragm Metering Pumps

Analog or Digital Operation



KEY FEATURES

- Analog and Digital Interface
- Three Pump Sizes Cover 1 To 29 GPH
- Standard One Piece Molded PVDF Pump Head
- PTFE Diaphragm Standard
- NEMA 4X Design/IP65 Rate
- Front facing controls, tubing and wiring connections allow for easy and flexible installation
- Built-In Degassing Valve on 100 and 200 Sizes
- Multi-Voltage Motor
- Complete Kit Includes PVDF Foot Valve, PVDF Injection Valve and Required Tubing



PVDF Multifunction Valve Optional

LIQUID LEVEL, FLOW AND ANALYTICAL PRODUCTS FROM HAYWARD FLOW CONTROL MEASURE AND CONTROL

HLS SERIES

Level Sensors



KEY FEATURES

- Highly accurate hydrostatic pressure measurement, 0.25% accuracy full scale
- All CPVC housing with Al₂O₃ (Alumina) sensing diaphragm
- 0-15 and 0-33 ft measurement range, 33 and 49 ft of PTFE coated cable std
- 10-35 VDC power required
- 4-20mA analog output signal
- 0-140°F temperature range
- MP10 desiccant tube and MP11 protection volume breather protection available
- Ceramic Sink Weights available for high specific gravity applications

HLST SERIES

Indicating Level Transmitter



KEY FEATURES

- Dual Channel input and display (CH2 is RTD for temperature)
- Configurable, multi-color LCD display
- Simple, Intuitive menu makes set-up quick and easy
- NEMA 4X (IP65) Face, 1/4 DIN chassis dimensions
- 100-240 VAC, 50-60 Hz power range std.
- Programmable dual relays and dual open collectors
- Optional HMCENC NEMA 4X Electrical Enclosure, 1/4 DIN Cutout, 6 wire connectors

HEX800 SERIES

Flowmeter



KEY FEATURES

- Insertion Electromagnetic Flow Sensor, 1" to 12"
- No moving parts, provides high reliability
- PVC Wetted Body, PVDF end cap, Hastelloy C Electrodes, EPDM o-ring, Cast AL Housing
- 0.28 to 20 FPS Velocity Range equals <1 GPM to 7000 gpm based on line diameter
- 150 psi @ 75F max, 32 to 130F
- +/- 1% Accuracy of Full Scale
- Blind 4-20mA output or integral (Built-in) Indicating Transmitter (HFT440)
- Full range of required insertion fittings available

HMC200 SERIES

MULTI-PARAMETER CONTROLLER



KEY FEATURES HMC200

- pH, ORP, conductivity & flow parameters available
- Highly visible large backlit LCD display
- Flexible and easy calibration, including multipoint conductivity calibration for acids and bases
- 4-20mA process output with range scaling and PID Control
- Universal mounting hardware for surface and panel mounting

HMC300 SERIES

WEB ENABLED MULTI-INPUT CONTROLLER



KEY FEATURES HMC300

- Inputs for four 4-20 mA sensors of any kind in any combination: pH, ORP, conductivity, dissolved O₂, Chlorine, level and more
- Inputs for three frequency or pulse counters, including Hayward HEX flow sensors
- Outputs of four relays programmable for any of the inputs
- Alarm notifications by e-mail, text, and/or display for each input

PVDF SOLUTIONS FOR THE HARSHTEST CHEMFEED SYSTEMS

TB SERIES

Ball Valves



KEY FEATURES

- Available in sizes 1/4" - 2"
- Available with Threaded or Socket Fusion (IPS) Ends
- Full Port Design
- FPM O-Ring Seals Standard
- Reversible PTFE Seats
- Double O-Ring Stem Seals
- Available with Electric or Pneumatic Actuation
- Natural PVDF per ASTM D3222 Type 1

TC SERIES

Ball Check



KEY FEATURES

- Available in sizes 1/4" - 1"
- Available with Threaded or Socket Fusion (IPS) Ends
- Ideal for Vertical Installation
- Square Cut Seat for Positive Sealing
- Seats with Minimum Back Pressure
- Solid PTFE Ball
- FPM O-Ring Seals Standard
- Natural PVDF per ASTM D3222 Type 1

YC SERIES

Y Checks



KEY FEATURES

- Available in sizes 1/2" - 1"
- Available with Threaded or Socket Fusion (IPS)
- Full Flow Design
- Minimum Pressure Drop
- PVDF Coil to Guide Piston to a Positive Seat
- Minimal Back Pressure Required to Seat Piston
- FPM Seals and O-rings
- Natural PVDF per ASTM D3222 Type 1

YS SERIES

Strainers



KEY FEATURES

- Available in sizes 1/2" - 1"
- Available with Threaded or Socket Fusion (IPS)
- Ideal for Horizontal or Vertical Installation
- FPM O-Ring Seals
- PVDF Screen Cage and PTFE Ends
- PTFE Screen with 3/32" Perforation as Standard
- Hex Cap for Easy Access to Screen
- Natural PVDF per ASTM D3222 Type 1

PBV/RPV SERIES

Back & Pressure Relief Valves



KEY FEATURES

- Natural PVDF Body with Noryl™ Bonnet
- PTFE/EPDM Diaphragm Standard
- Spring: 10 - 150 psi (Spring pre-set: 50 psi)
- 304 Stainless Steel Bolting
- FNPT Threads
- Anti-Siphon Function
- Adjustment Screw with Slot
- Pressure rated to 250 psi

NVA SERIES

Needle Valves



KEY FEATURES

- Available in sizes 1/4", 3/8" and 1/2"
- Ideal for Metering Flow
- Integrated Stem/PTFE Seat Design
- Flanges for Panel Mounting
- NPT Threaded Ends
- Fine Pitch Stem Threads for Precise Adjustment
- Adjust Flow Rates Down to Drops per Minute
- FPM Seal Standard
- Natural PVDF per ASTM D3222 Type 1

SB SERIES

Simplex Basket Strainers



KEY FEATURES

- Available in sizes 1/2" - 2"
- Available with Threaded, Socket Fusion (IPS) or Flanged
- True Union Design
- Ergonomic Hand-Removable Cover
- External Cover Threads
- Integral Flat Mounting Base
- FPM O-Ring Seals
- PVDF Basket Standard
- Natural PVDF per ASTM D3222 Type 1

All valves and strainers carry a pressure rating of 150psi/10 bar Non-Shock at 70°F/ 23°C. Maximum service temperature is 240°F/115°C.

HDPE END CONNECTORS BY HAYWARD® FLOW CONTROL

Available from Hayward Flow Control, HDPE end connectors for Hayward Valves and Strainers. Offered in 9, 11 and 17 SDR sizes in True Union Connectors.



TBH SERIES

True Union Ball Valves

1/2" to 1" Available in 9, 11 SDR

1-1/4" to 4" Available in 9, 11, 17 SDR



TC SERIES

True Union Ball Check Valves

1/2" to 1" Available in 9, 11 SDR

1-1/4" to 4" Available in 9, 11, 17 SDR



YC SERIES

True Union Y-Check Valves

1/2" to 1" Available in 9, 11 SDR

1-1/4" to 3" Available in 9, 11, 17 SDR



YS SERIES

True Union Y-Strainers

1/2" to 1" Available in 9, 11 SDR

1-1/4" to 3" Available in 9, 11, 17 SDR



SB SERIES

True Union Simplex Basket Strainers

1" Available in 9, 11 SDR

2" to 3" Available in 9, 11, 17 SDR



FLV/CFLV SERIES

Bag & Cartridge Filter Vessels

2" & 3" Available in 9, 11, 17 SDR



†HDPE end connectors may be provided as a kit. Contact factory for metric availability.

NOTES

Hayward Flow Control is passionate about solving our customer's problems.

Our products serve vital roles in numerous unforgiving processes that impact all walks of life. With an industrial mindset and a passion for excellence, Hayward Flow Control continues to drive forward with purpose, forward thinking and American ingenuity. We mean it when we say:

TRUE GRIT.
WE HAVE IT.



**Buy
American**



Hayward is a registered trademark
of Hayward Industries, Inc.
© 2024 Hayward Industries, Inc.

USA: 1.888.429.4635 | Fax: 1.888.778.8410 | One Hayward Industrial Drive, Clemmons, NC 27012 | Email: hfcsales@hayward.com
Canada: 1.888.238.7665 | Fax: 1.905.829.3636 | 2880 Plymouth Drive, Oakville, ON L6H 5R4 | Email: hflowcanada@hayward.com
Visit us at: haywardflowcontrol.com

MG0824