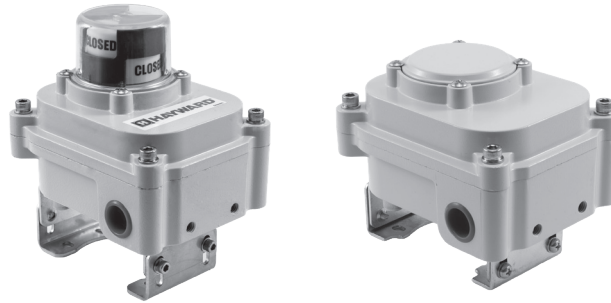




LSH SERIES LIMIT SWITCH FOR PNEUMATIC ACTUATORS

Epoxy coated cast aluminum NEMA 4/4X and IP67 rated enclosure. Two SPDT 125-250 VAC, 15 Amp mechanical switches with adjustable cams to signal actuator end of travel. Yellow/Black indicator beacon standard, with Red/Green beacon and 3-Way beacon options. Flat top version available. NAMUR mounting bracket included.



ACTUATION

LSH Series: Standard Duty		
Description	Part Number	List Price USD
Standard Duty Flat Top Limit Switch	LSH002M0AS	\$537.80
Standard Duty, Beacon Indicator Limit Switch	LSH102M0AS	\$614.39
Red/Green Beacon Indicator (Optional)	LSH1R00000	\$153.75
3-Way Beacon Indicator (Optional)	LSH1T00000	\$153.75

Epoxy coated cast aluminum Class I/Div I hazardous location rated enclosure. Two SPDT 250 VAC, 5 Amp proximity switches with adjustable cams to signal actuator end of travel. Red/Green indicator beacon standard, with Yellow/Black beacon and 3-Way beacon options. NAMUR mounting bracket not included.



LSH Series: Hazardous Location Class I/Div I		
Description	Part Number	List Price USD
Class I/Div I Beacon Indicator Limit Switch	LSH1R2PCAS	\$1,069.20
Yellow/Black Beacon Indicator (Optional)	LSH1000C00	\$153.75
3-Way Beacon Indicator (Optional)	LSH1T00C00	\$153.75
NAMUR Mounting Bracket Kit (Optional)	LSHBKTKIT1	\$126.45